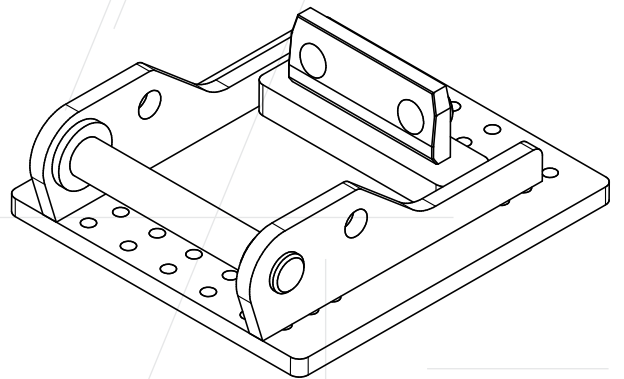
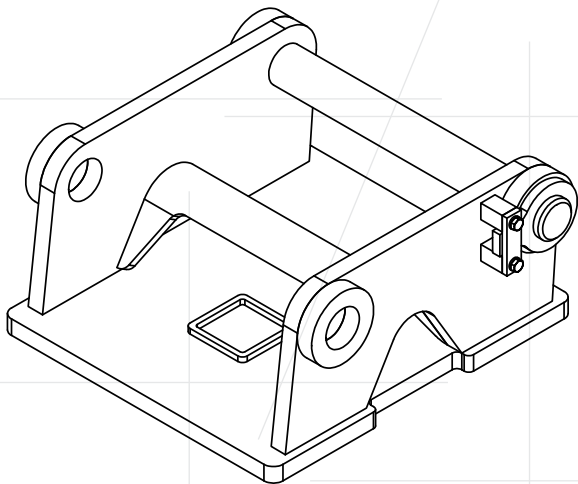
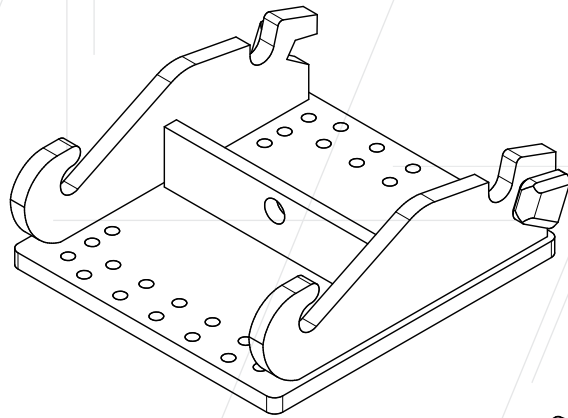
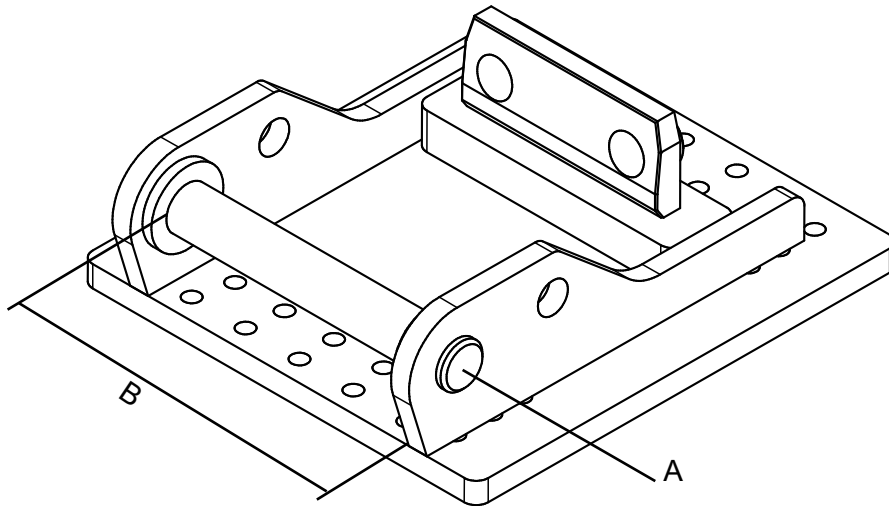


## Mounting plates



## Mounting plates

- Compatible with Lehnhoff - system

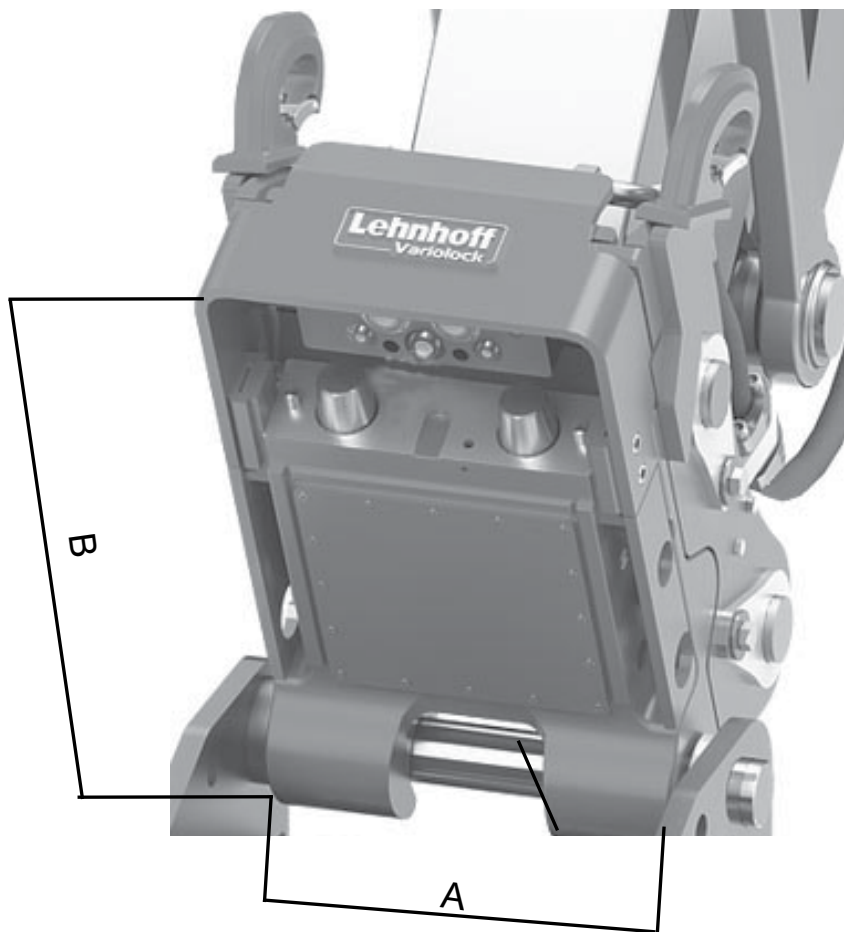


Technical details	MS 01	MS03	MS 08	MS 10
A bolt Ø (mm)	40	50	60	70
B overall width (mm)	185	205	295	405
operating weight (t)	0,7 - 2	1,5 - 5	5 - 10	10 - 19
weight ca. (kg)	15	25	75	170

Technical details	MS20	MS 21- 25	MS 25- 600	MS 40
A bolt Ø (mm)	80	80	80	100
B overall width (mm)	405	505	610	760
operating weight (t)	18 - 26	21 - 40	28 - 55	40 - 55
weight ca. (kg)	220	270	310	600

Technical details	HS 40- 70	HS 80	HS 100
A bolt Ø (mm)	100	140	140
B overall width (mm)	760	1.100	1.100
operating weight (t)	55 - 70	70 - 90	90 - 120
weight ca. (kg)			

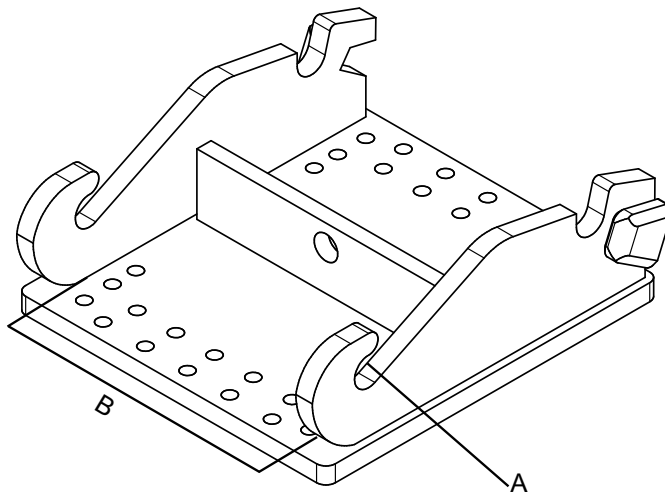
- Passend zum Lehnhoff Vario- System



Technical details	VL30	VL80	VL100	VL210	VL250
operating weight (t)	1,5- 6	6 - 12	10 - 129	18 - 28	26 - 40
A width (mm)	200	335	395	495	600
B length (mm)	284	570	520	545	545
weight ca. (kg)	50	90	220	350	550
be compatible with	MS03	MS08	MS10	MS21	MS21
valve	5x KV1	3x KV1 2x KV2	3x KV1 2x KV3	2x KV1 1x KV3 2x KV4	2x KV1 1x KV3 2x KV4

## Mounting plates

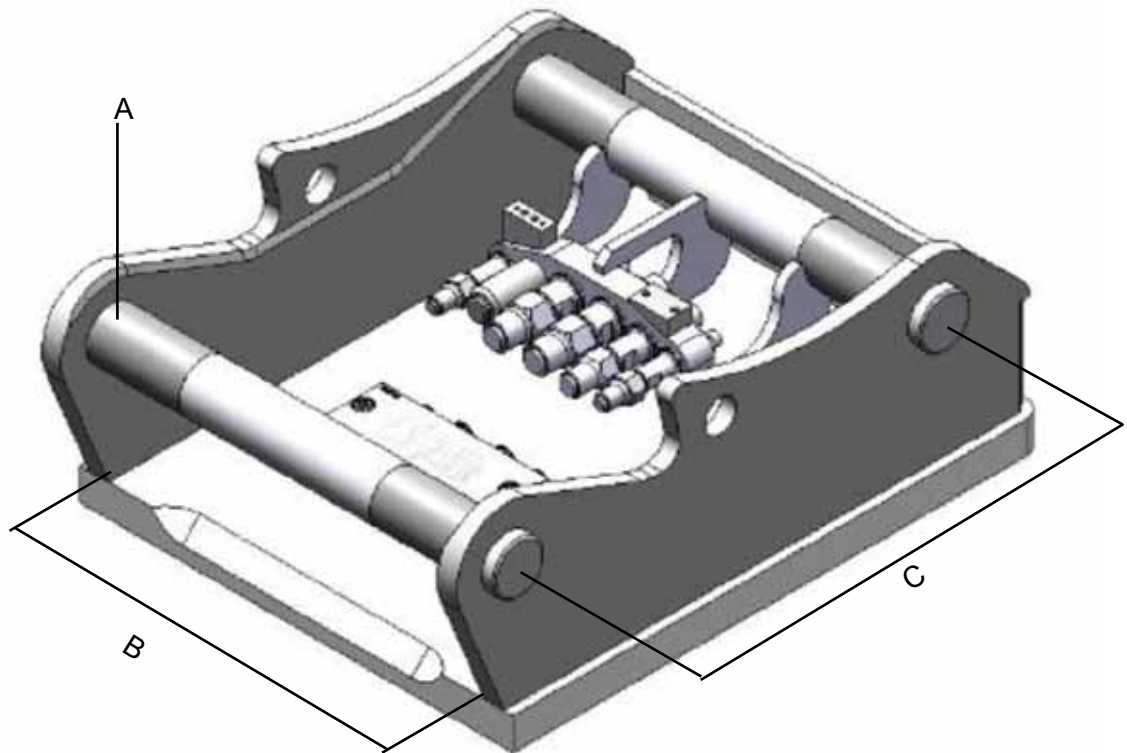
- Compatible with Verachttert - system



Technical details	CW 05	CW 10	CW 20 - 40	CW 20 - 40 S	CW 45 S
A bolt Ø (mm)	40	50	60	60	90
B overall width (mm)	180	320	560	430	560
operating weight (t)	0 - 3,5	3,5 - 10,5	7,5 - 30	7,5 - 30	25 - 40

Technical details	CW 45	CW 55	CW 55 S	CW 70	CW 100
A bolt Ø (mm)	90	105	105	130	
B overall width (mm)	700	845	575	875	1.200
operating weight (t)	25 - 40	35 - 65	35 - 65	65- 90	120 - 160

- Compatible with Oil Quick - system

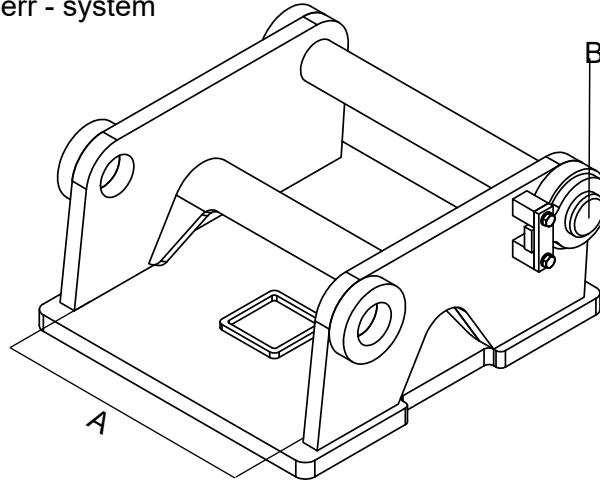


Technical details	OQ 40	OQ 45	OQ 60	OQ 65
B overall width (mm)	240	290	340	440
C distance between bolts (mm)	300	430	480	530
A bolt Ø (mm)	40	45	60	65
max. amount of couplings	3	4	4	5
operating weight (t)	1 - 5	5 - 12	8 - 15	14 - 22
weight (kg)	30	85	135	170

Technical details	OQ 70	OQ 70/55	OQ 80	OQ 90	OQ 120
B overall width (mm)	450	550	590	750	870
C distance bolts (mm)	600	600	670	750	925
A bolt Ø (mm)	70	70	80	90	120
amount of couplings	5	6	6	9	8
operating weight (t)	15 - 28	18 - 32	25 - 43	40 - 70	70 - 120
weight (kg)	210	230	350	630	1.200

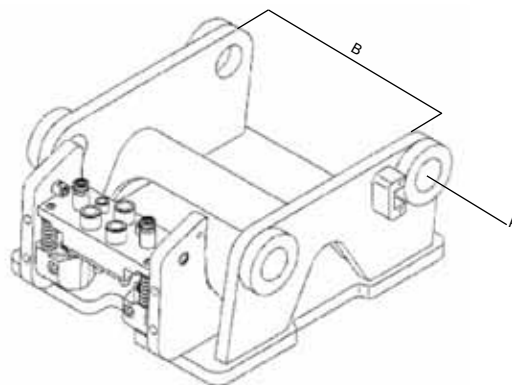
## Mounting plates

- Compatible with Liebherr - system



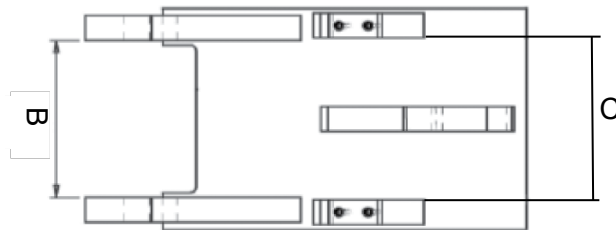
Technical details	SW 22	SW 33	SW 48	SW 66	SW 77	SW 92	SW 105
A bolt Ø (mm)		60	70	80	90	120	
B overall width (mm)	220	330	480	660	770	920	1.050
operating weight (t)	11 - 14	11 - 22	14 - 34	40 - 60	60 - 76		

- Compatible with Liebherr - system



Technical details	SW 33 Likufix	SW 48 Likufix	SW 66 Likufix	SW 77 Likufix
A bolt Ø (mm)	60	70	80	90
B overall width (mm)	330	480	660	770
operating weight (t)	11 - 22	14 - 34	40 - 60	60 - 76

- Compatible with SMP - Atlas system



Technical details	T11.20 Atlas	T620 Atlas
B distance between hooks	250 <sup>+2</sup> / <sub>0</sub>	320 <sup>+3</sup> / <sub>0</sub>
distance between bananas		420 <sup>+2</sup> / <sub>0</sub>
C distance between blocks	165 <sup>0</sup> / <sub>-2</sub>	330 <sup>0</sup> / <sub>-3</sub>
operating weight (t)	2 - 11	10 - 22

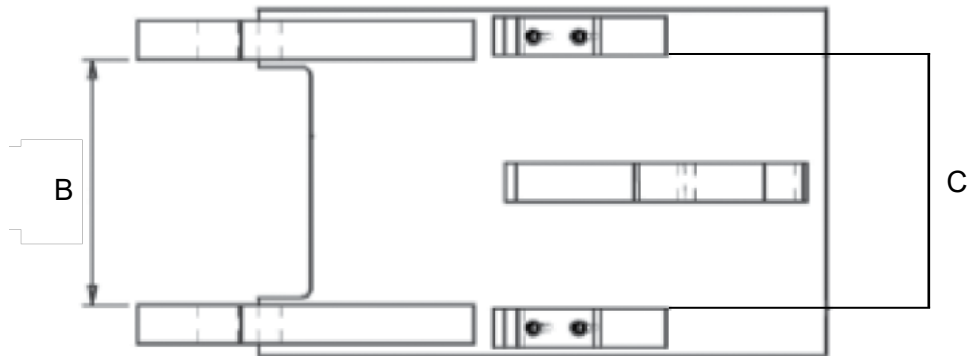
  

Technical details	T63.20 Atlas	T- 721 Atlas	T- 722 Atlas
B distance between hooks	360	454 <sup>+2</sup> / <sub>0</sub>	498
distance between bananas			
C distance between blocks	293	166 <sup>0</sup> / <sub>-2</sub>	296
operating weight (t)	18 - 32	18 - 32	18 - 32

Distance between the hooks and between the blocks are measured on working tools.  
Distance between the bananas has to be measured on quick coupler.

## Mounting plates

- Compatible with SMP attachment bracket



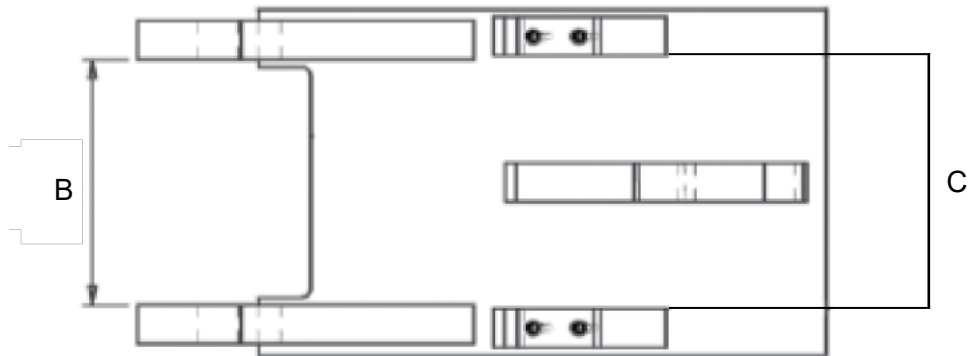
Technical details	SMP 4	SMP 3	SMP 3 JCB	SMP 3 O & K
B distance between hooks	137 <sup>+3</sup> / <sub>0</sub>	192 <sup>+2</sup> / <sub>0</sub>	200 <sup>+3</sup> / <sub>0</sub>	202 <sup>+2</sup> / <sub>0</sub>
distance between bananas		186		202 <sup>0</sup> / <sub>-2</sub>
C distance between blocks	124 <sup>0</sup> / <sub>-2</sub>	188 <sup>0</sup> / <sub>-2</sub>	188 <sup>0</sup> / <sub>-2</sub>	203 <sup>0</sup> / <sub>-2</sub>
operating weight (t)	0,5 - 1,6	1,7 - 8	1,7 - 8	1,7 - 8

Technical details	SMP 3 Kobelco	SMP 8	SMP 3 Case	SMP 2
B distance between hooks	235 <sup>+2</sup> / <sub>0</sub>	271 <sup>+2</sup> / <sub>0</sub>	300 <sup>+2</sup> / <sub>0</sub>	335 <sup>+2</sup> / <sub>0</sub>
distance between bananas		270 <sup>0</sup> / <sub>-2</sub>	298	330
C distance between blocks	203 <sup>0</sup> / <sub>-2</sub>	268 <sup>0</sup> / <sub>-2</sub>	268 <sup>0</sup> / <sub>-2</sub>	327 <sup>0</sup> / <sub>-2</sub>
operating weight (t)	1,7 - 8	5 - 11	1,7 - 8	11 - 18

Technical details	SMP 2 O & K	SMP 2 Euro	SMP 2 Poclain
B distance between hooks	335 <sup>+3</sup> / <sub>0</sub>	380 <sup>+3</sup> / <sub>0</sub>	402 <sup>+2</sup> / <sub>0</sub>
distance between bananas		368 <sup>0</sup> / <sub>-3</sub>	398 <sup>0</sup> / <sub>-2</sub>
C distance between blocks	237 <sup>0</sup> / <sub>-2</sub>	378 <sup>0</sup> / <sub>-3</sub>	112 <sup>0</sup> / <sub>-2</sub>
operating weight (t)	11 - 18	11 - 18	11 - 18



- Compatible with SMP attachment bracket



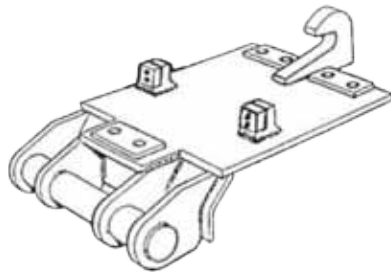
Technical details	SMP 1	SMP 1 O & K	SMP 100
B distance between hooks	402 <sup>+3</sup> / <sub>0</sub>	402 <sup>+3</sup> / <sub>0</sub>	502 <sup>+3</sup> / <sub>0</sub>
distance between bananas	398 <sup>0</sup> / <sub>-2</sub>		
C distance between blocks	377 <sup>0</sup> / <sub>-2</sub>	377 <sup>0</sup> / <sub>-2</sub>	476 <sup>0</sup> / <sub>-2</sub>
operating weight (t)	17 - 30	17 - 30	30 - 50

Technical details	SMP 100 O & K	SMP 2 RH 6
B distance between hooks	502 <sup>+3</sup> / <sub>0</sub>	570 <sup>+3</sup> / <sub>0</sub>
distance between bananas		
C distance between blocks	476 <sup>0</sup> / <sub>-2</sub>	148 <sup>0</sup> / <sub>-2</sub>
operating weight (t)	30 - 50	11 - 18

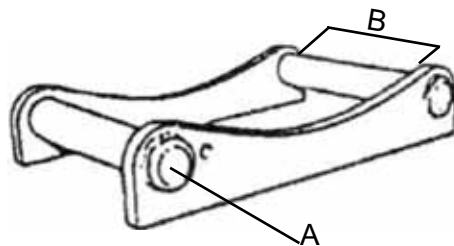
Technical details	SMP 1 RH 9	SMP 1RH 12
B distance between hooks	580 <sup>+3</sup> / <sub>0</sub>	604 <sup>+3</sup> / <sub>0</sub>
distance between bananas		
C distance between blocks	230 <sup>0</sup> / <sub>-2</sub>	230 <sup>0</sup> / <sub>-2</sub>
operating weight (t)	17 - 30	17 - 30

## Mounting plates

- Compatible with Volvo- system



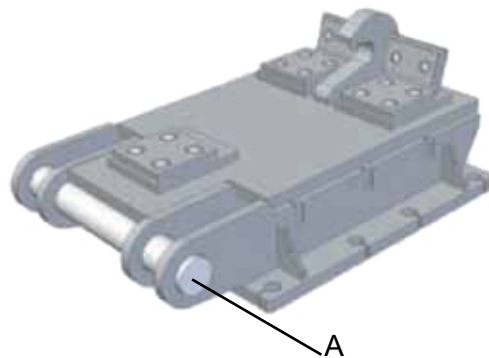
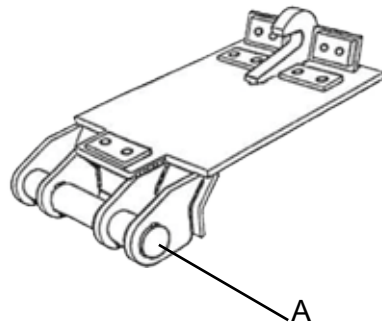
Technical details	ABL45	ABL S1	ABL S2	ABL S3
overall width (mm)				
bolt Ø (mm)				
weight (kg)				
operating weight (t)	490	80	105	320



Technical details	S30/180	S35	S40	S45
B overall width (mm)		180	200	290
A bolt Ø (mm)	30	35	40	45
weight (kg)	5	6	8 - 15	22
operating weight (t)	0,5 - 2		2 - 5	5 - 12

Technical details	S50	S60	S70	S80	S100
B overall width (mm)	270	340			
A bolt Ø (mm)	50	60	70	80	
weight (kg)	25- 30	35- 40	50 - 70	70 - 120	160
operating weight (t)	5 - 13	12 - 18	17 - 25	25 - 40	

- Compatible with Caterpillar- Zeppelin- system

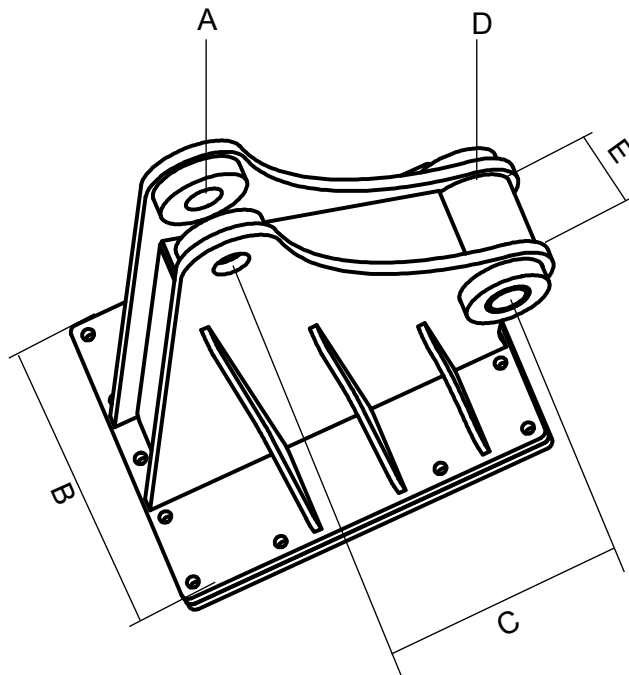


Technical details	ABL27B	ABL1019	ABL1830	ABL3050	ABL4590
overall width (mm)					
A bolt Ø (mm)					
weight (kg)		10 - 18	13 - 33	28 - 50	45- 90
operating weight (t)	100	110- 150	180 - 290	350	600

Technical details	B18	B20 / S1	B27 / S2	B30 / S3
overall width (mm)				
A bolt Ø (mm)		70	80	100
weight (kg)	80	100	120	200
operating weight (t)	12 - 17	13 - 22	18 - 29	25 - 40

## Mounting plates

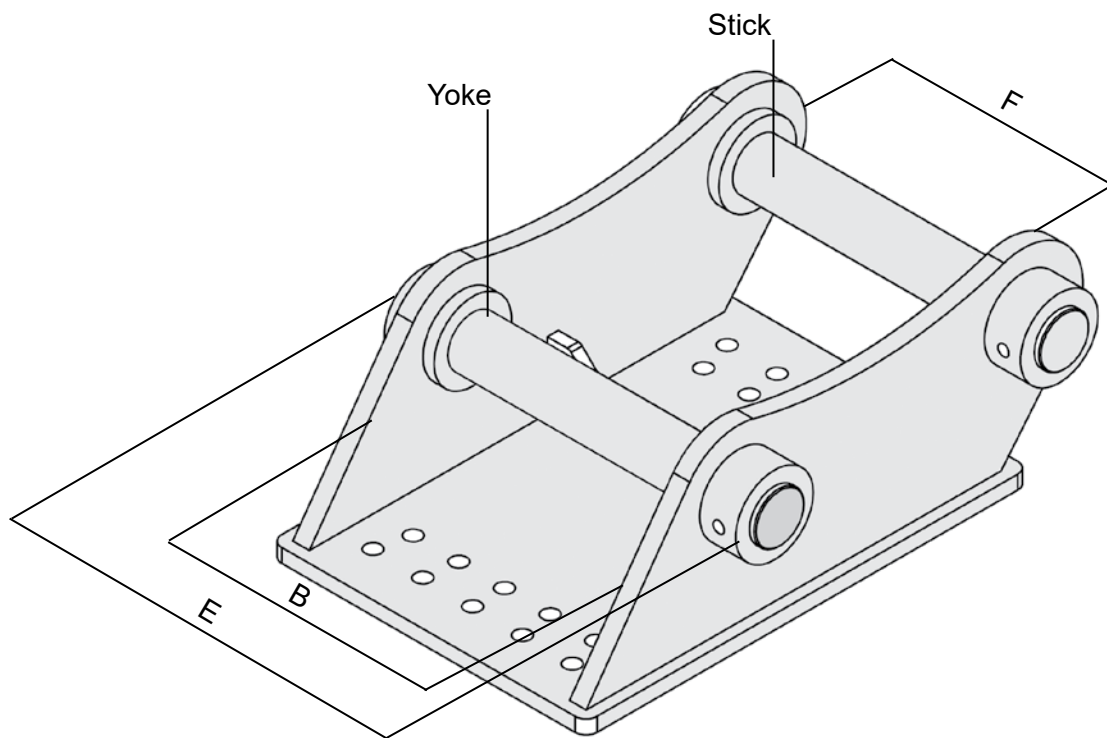
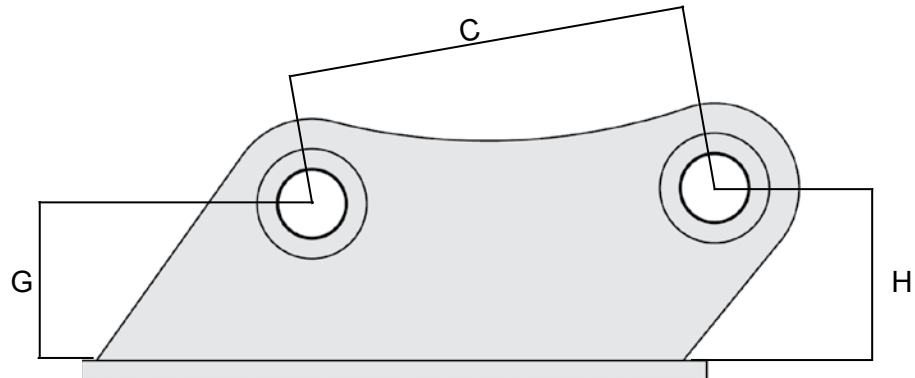
- Compatible with boom extension



### Technical details

A bolt Ø (mm)	
D bolt Ø (mm)	
B overall width (interior) (mm)	
E overall width (interior) (mm)	
C distance between bolts (mm)	
operating weight (t)	

- Compatible to fixtures



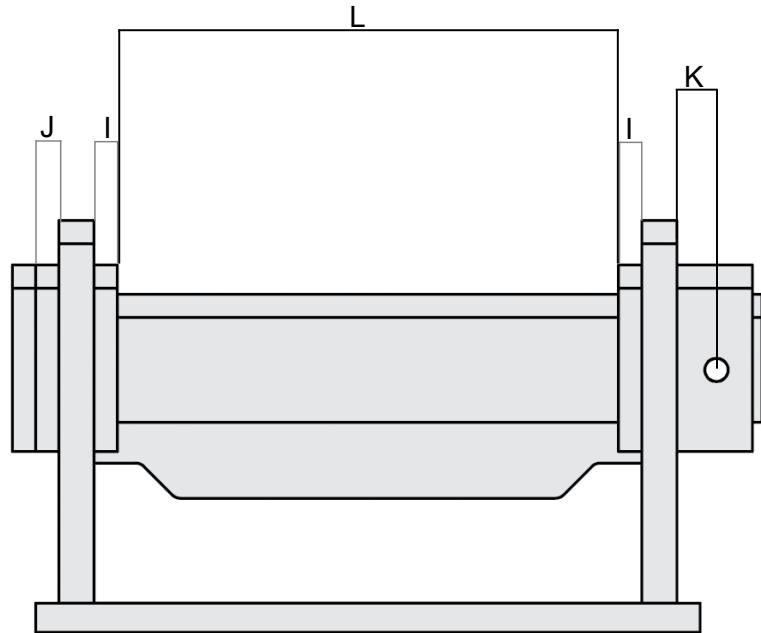
#### Technical details

Yoke pin Ø (mm)	
Stick pin Ø (mm)	
B structural width (inside) (mm)	
E structural width (outside) (mm)	
F structural width (outside) (mm)	
G pin high (mm)	
H pin high (mm)	
C pin distance (mm)	
operating weight (t)	

## Mounting plates

- Compatible to fixtures

### Mounting bracket - pin:

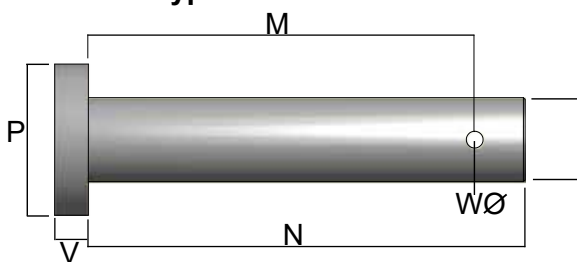


#### Technical details

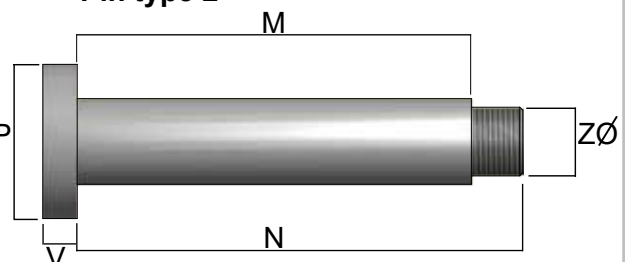
J bearing eye outside (mm)	
I bearing eye inside (mm)	
K pin hole distance (mm)	
L pin length inside - Stick (mm)	
L pin length inside - Yoke (mm)	

### Pin type:

#### Pin type 1



#### Pin type 2



#### Technical details

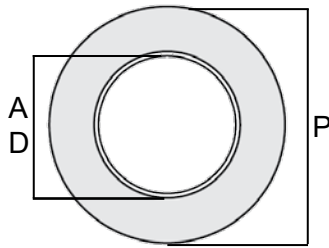
Stick

Yoke

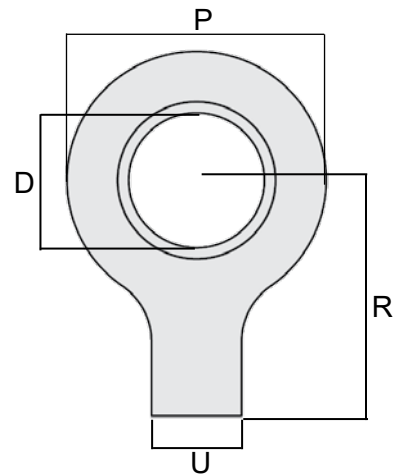
pin type		
M pin length inside (mm)		
N pin length outside (mm)		
P lug Ø outside (mm)		
V lug strength (mm)		
W safety drill Ø (mm)		
Y pin Ø (mm)		
Z thread Ø (mm)		

**Pin retention:**

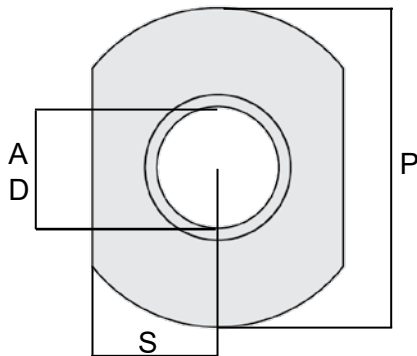
**type 3**



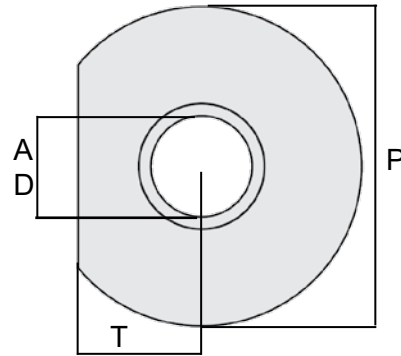
**type 4**



**type 5**



**type 6**



**Technical details**

Stick- bolt

Yoke- bolt

Technical details	Stick- bolt	Yoke- bolt
security type		
D pin Ø inside (mm)		
D pin Ø inside (mm)		
R security length (mm)		
S security wide (mm)		
T security wide (mm)		
U lug wide (mm)		

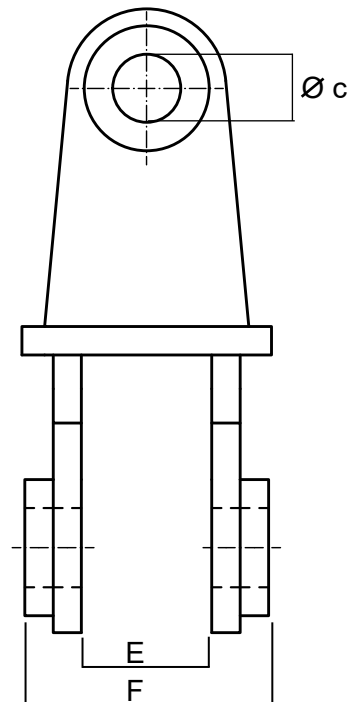
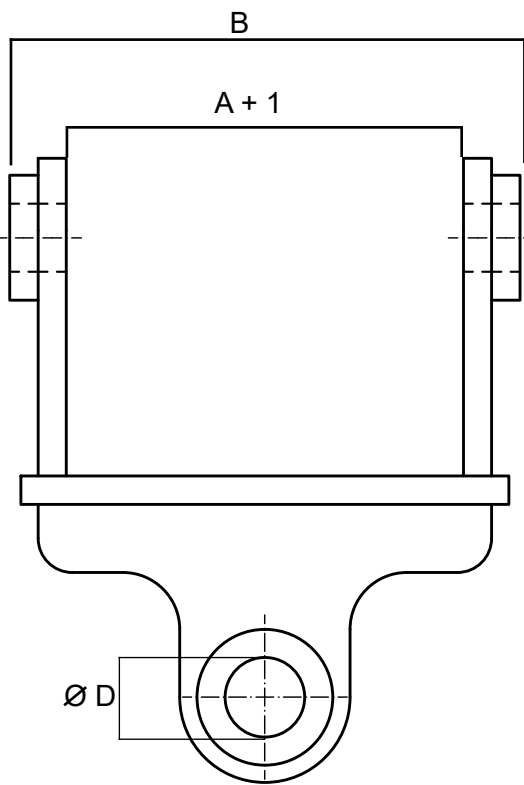
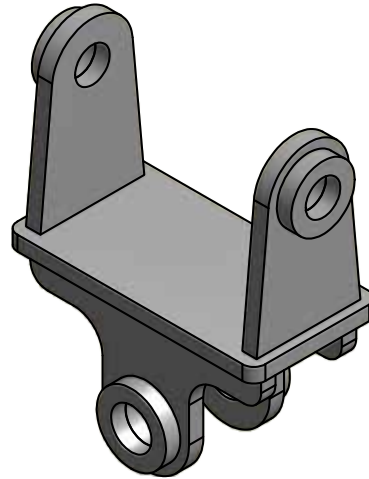
## Mounting plates

- System - grab suspension outside - outside

manufacturer: \_\_\_\_\_

machine: \_\_\_\_\_

type: \_\_\_\_\_



### Technical details

outside - outside

A suspension inside - excavator side (mm)	
B suspension outside - excavator side (mm)	
C pin diameter - excavator side (mm)	
E suspension inside - machine side (mm)	
F suspension outside - machine side (mm)	
D pin diameter - machine side (mm)	

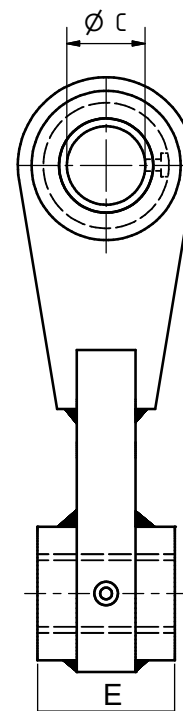
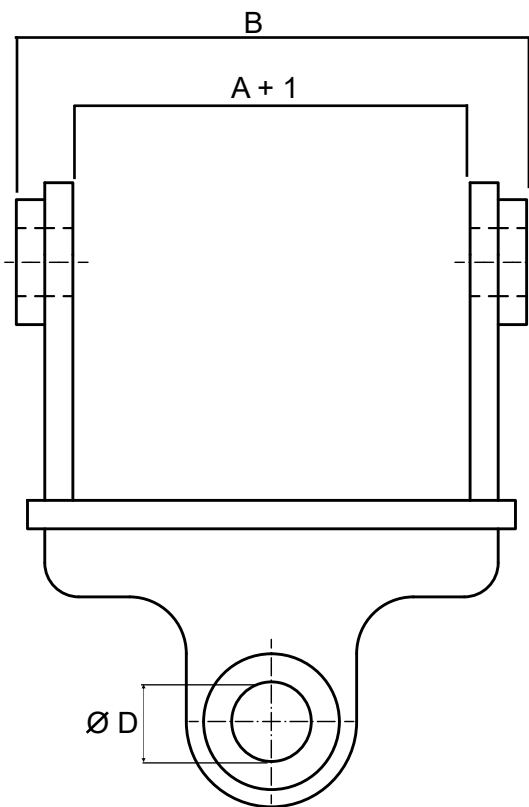
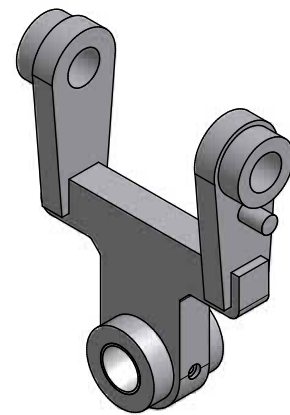


- System - grab suspension outside - inside

manufacturer: \_\_\_\_\_

machine: \_\_\_\_\_

type: \_\_\_\_\_



**Technical details**

**outside - inside**

A suspension inside - excavator side (mm)	
B suspension outside - excavator side (mm)	
C pin diameter - excavator side (mm)	
E suspension outside - machine side (mm)	
D pin diameter - machine side (mm)	

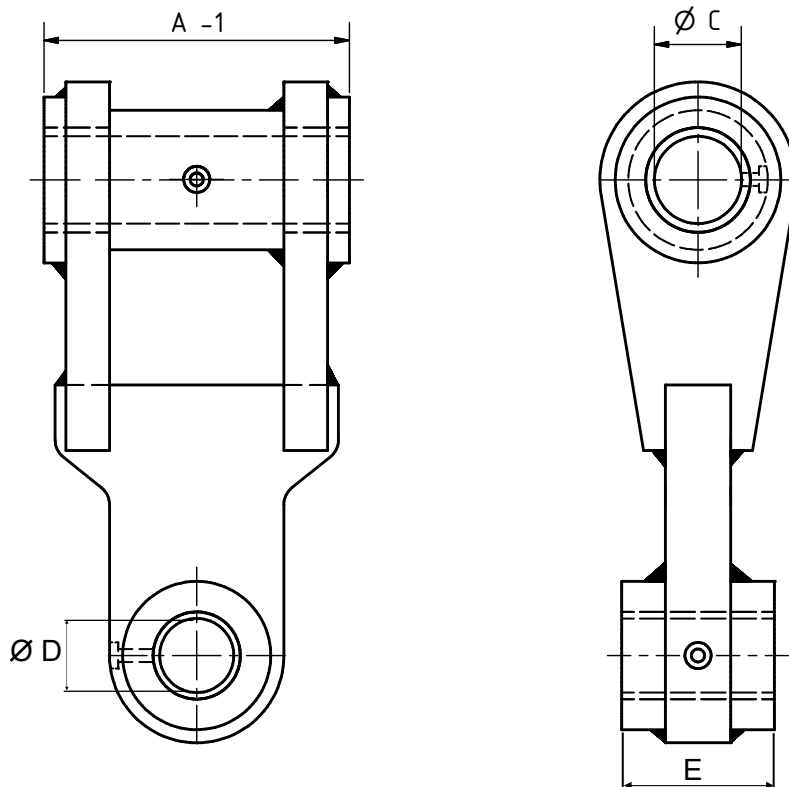
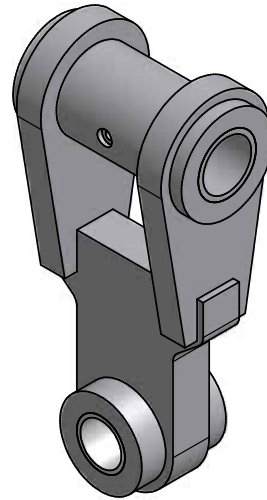
## Mounting plates

- System - grab suspension inside - inside

manufacturer: \_\_\_\_\_

machine: \_\_\_\_\_

type: \_\_\_\_\_



### Technical details

inside - inside

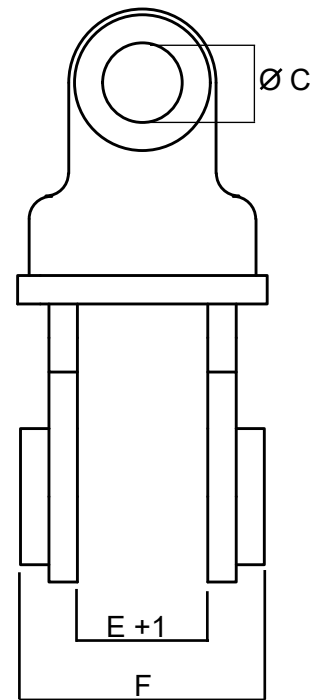
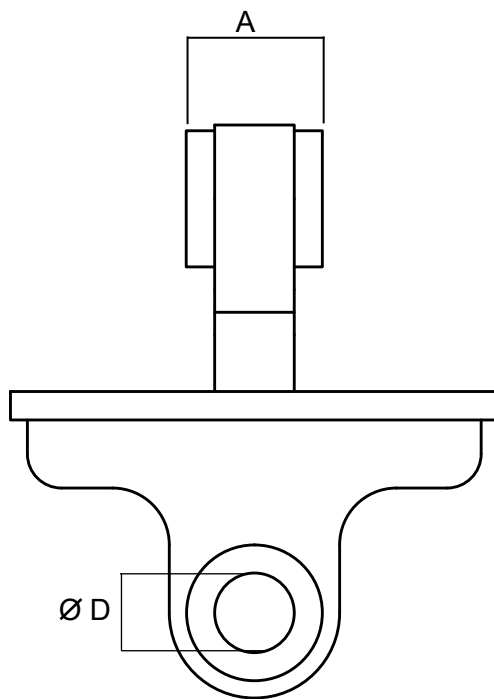
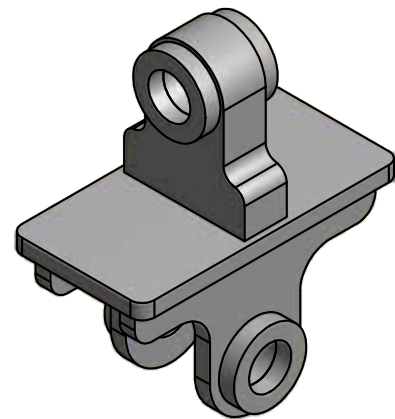
A suspension outside - excavator side (mm)	
C pin diameter - excavator side (mm)	
D pin diameter - machine side (mm)	
E suspension outside - machine side (mm)	

- System - grab suspension inside - outside

manufacturer: \_\_\_\_\_

machine: \_\_\_\_\_

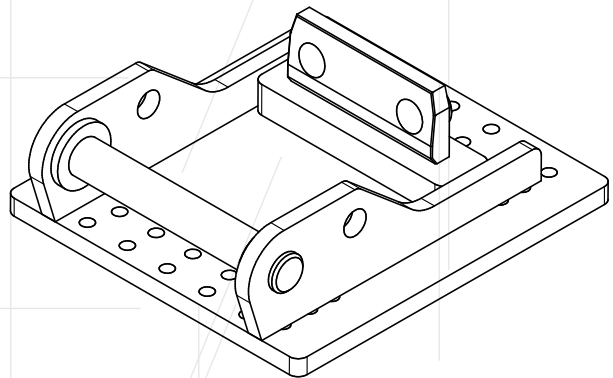
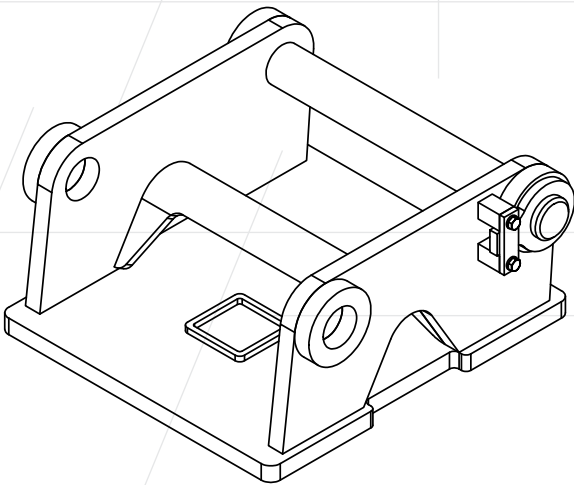
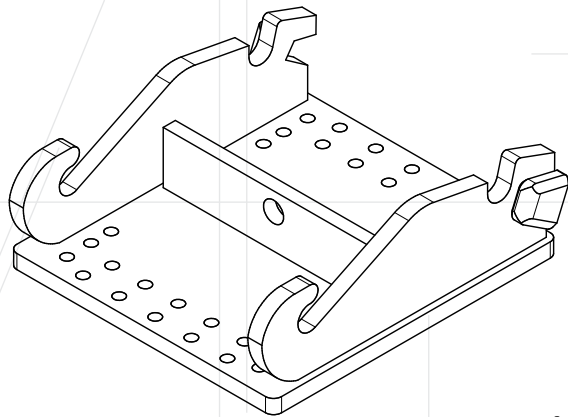
type: \_\_\_\_\_



**Technical details**

**inside - outside**

A suspension outside - excavator side (mm)	
C pin diameter - excavator side (mm)	
E suspension inside - machine side (mm)	
F suspension outside - machine side (mm)	
D pin diameter - machine side (mm)	



Steck Abbruchgeräte GmbH  
Hauptstr. 20  
D- 89192 Rammingen

Gerichtsstand: Ulm/ Donau HRB 726131  
Ust.- ID Nr.: DE275269830  
Tel. +49 (0) 7345 9123 - 0  
Fax +49 (0) 7345 9123 - 20  
E-Mail [info@steck.de](mailto:info@steck.de)  
Internet [www.steck.de](http://www.steck.de)

Ihr Ansprechpartner:

Empty dashed box for contact information.