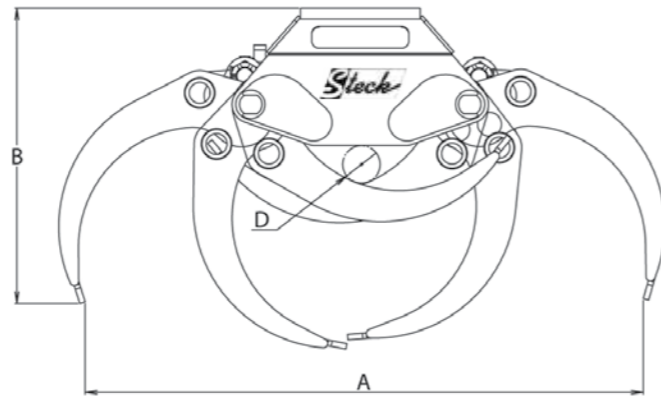
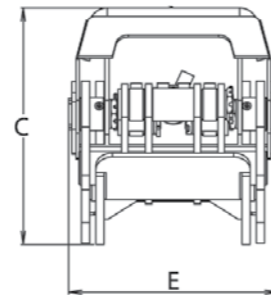


Wood grab G4Holz



Technical details	G4 Holz
operating weight (t)	12 - 25
weight (kg)	408
load capacity (t)	8
jaw content (m ²)	0,5
A width open (mm)	1.831
B height open (mm)	982
C height close (mm)	676
D smallest Ø (mm)	100
E shell width (mm)	533
closing force (kN)	21,8
flow (l/min)	70
operating pressure (bar)	300



Easy handling

- low net weight
- high closing force

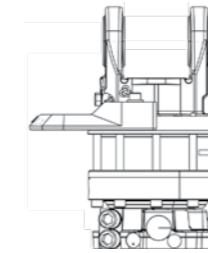
Easy maintenance

- Lubrication with change of position
- grab completely made of high- quality materials

Special Grabbs for Specific application

The wood grab is used to record, hard gripping and moving of material. The wood grab is available in swivel or non-swivel design and is due the robust design and reliability for industrial, etc. used.

Grab rotator



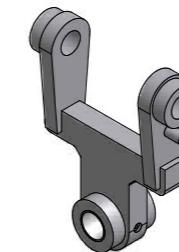
EAN72303

weight (kg)	57,7
connection G	1/2
weight (mm)	333
Ø (mm)	229
rotation (°)	360
max. static load (kg)	10.000
max. dynamic. load (kg)	5.000
flow (l/min)	25
torque (Nm at 250 bar)	2.200



G4 Holz with grab rotator (EAN72303), grab suspension SW33 (EAN82103) and pendulum suspension (EAN70199)

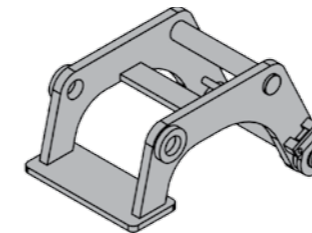
Pendulum suspension



EAN70199

weight (kg)	29,3
height (mm)	505
width (mm)	280

Grab suspension SW 33 Likufix



EAN82103

weight (kg)	102
pin Ø (mm)	60





Steck Abbruchgeräte GmbH
Hauptstr. 20
D- 89192 Rammingen

place of jurisdiction: Ulm/Donau HRB 726131
VAT- ID No.: DE275269830
phone +49 (0) 7345 9123 - 0
fax +49 (0) 7345 9123 - 20
mail info@steck.de
internet www.steck.de

your contact person: