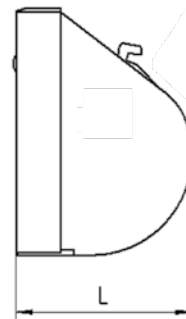
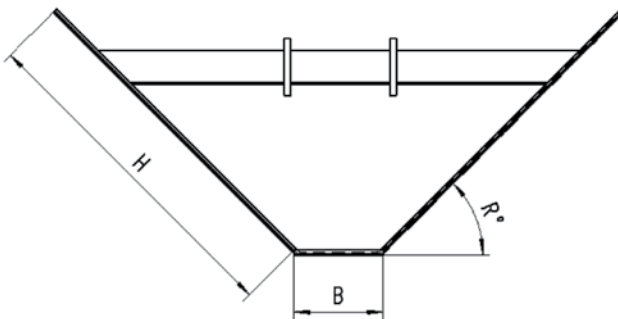
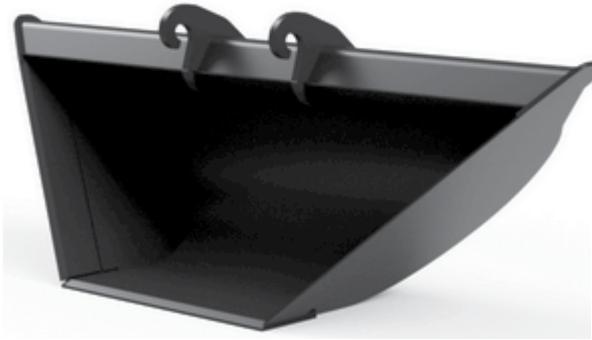


## Trapezlöffel



Bezeichnung	Schnittbreite B in mm	Tiefe L in mm	feste Flügel H in mm	Winkel in °	Inhalt in l
TZL-400	400	778	1.700	45	800
TZL-500	500	923	1.800	45	1.000
TZL-1000	1.000	923	2.100	52	1.400
TZL-600	600	985	2.500	34	1.850